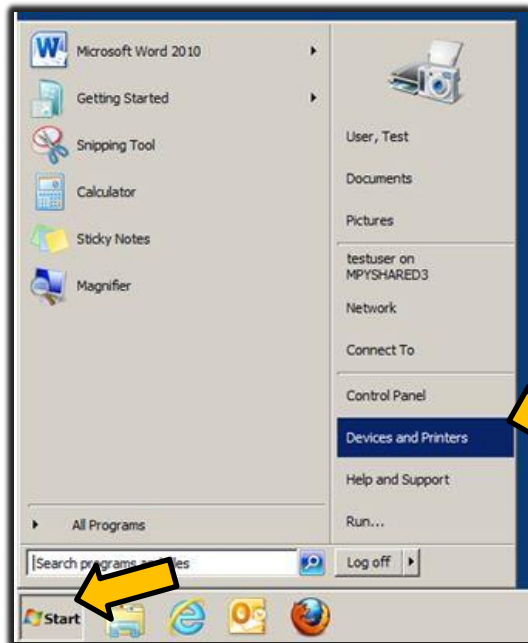
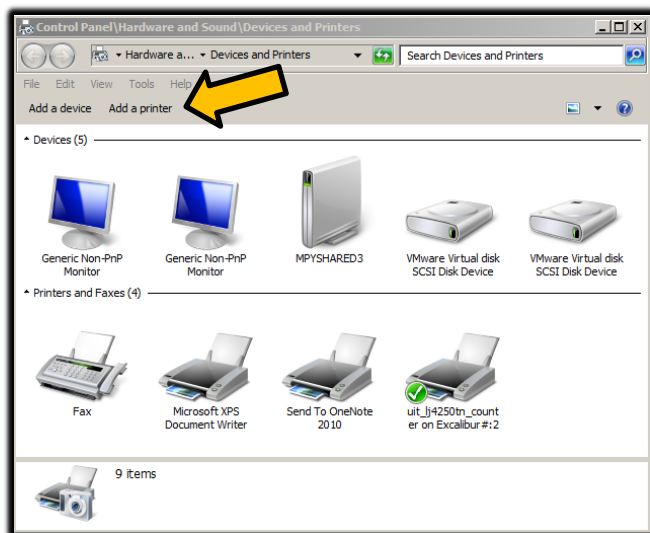


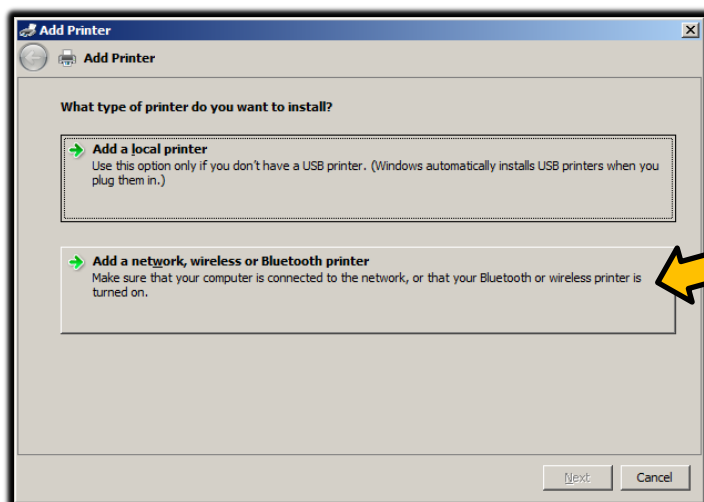
HOW TO ADD A PRINTER



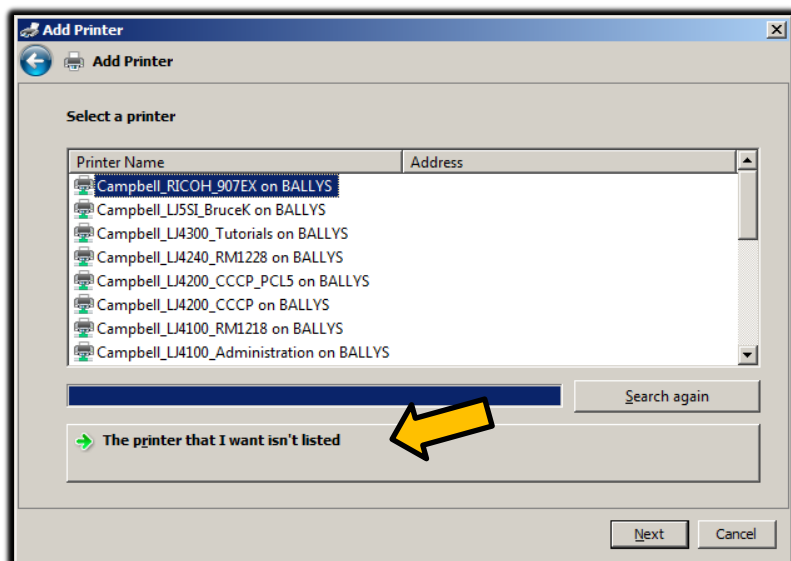
Click on 'START', then click on 'Devices and Printers'.



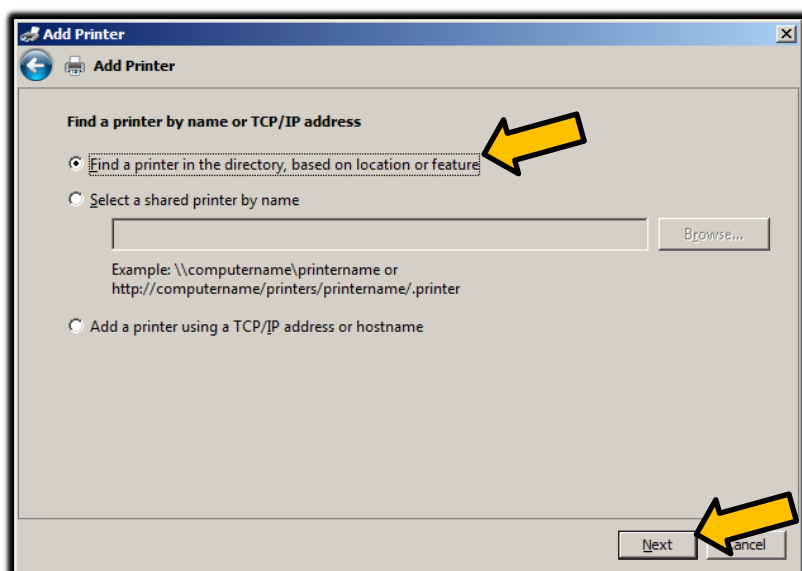
Click on 'Add a Printer'.



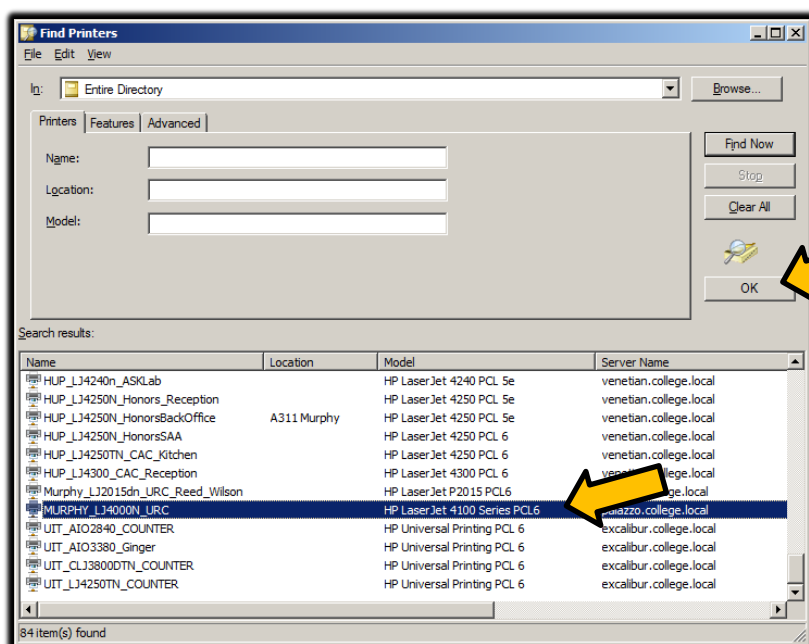
Click on 'Add a network, wireless or Bluetooth printer'.



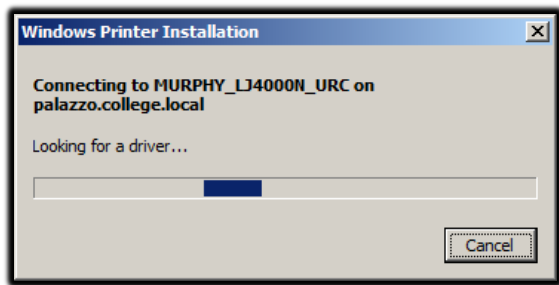
Click on 'The printer that I want isn't listed'.



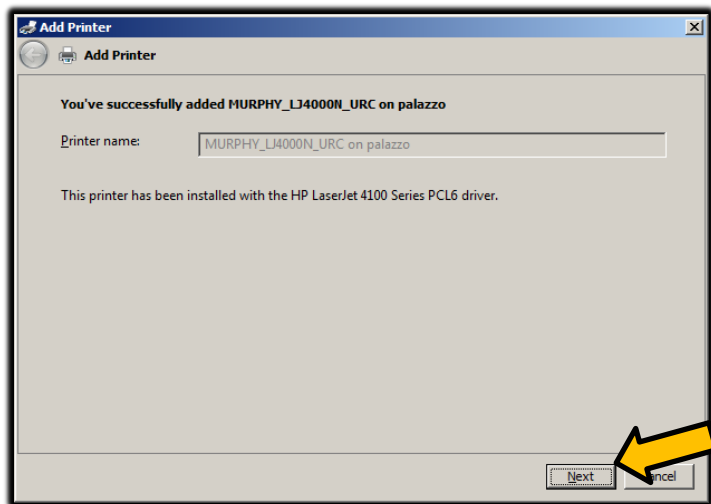
Click on 'Find a printer in the directory, based on location or feature', and then click 'Next'.



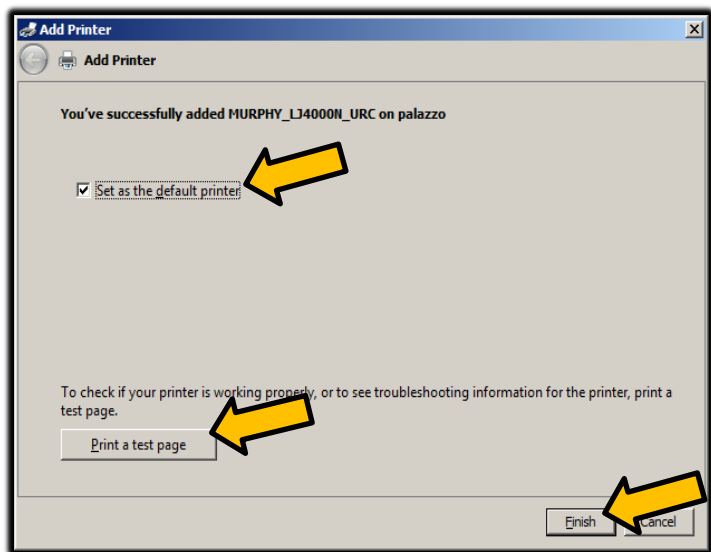
This will create a list of all available printers. Scroll down in the list to find the name of the printer you wish to add. Click on the name to highlight it, then click the 'OK' button.



Windows will search for and install the appropriate printer driver.



Once the driver has been successfully installed, click on 'Next'.



By default, Windows sets the newly added printer as the default; clear the checkbox if you want to keep your current default printer. If you would like to print a test page, click the button, otherwise, just click 'Finish'.